

**Sussex County Planning  
and Zoning  
Ordinance No. 5  
“Forest Preservation”**

**Testimony by  
Steve Sinclair**

**Sussex Preservation Coalition**



SPC

wholeheartedly  
supports this  
important and  
long-needed  
ordinance with  
several  
modifications



# Land Use Reform Working Group Recommendation #13 Forest Preservation

*“Promote the retention of existing trees by enacting value-based tree preservation requirements, including mitigation options and incentives to promote preservation. Revise the existing “Forest” definition: Provide minimum standards for retention based on the forest location. Forest Mitigation: Forests may be cut or cleared over a greater area than permitted only if mitigation is provided. Develop landscape and tree planting requirements for development projects”*



# Key Provisions We Support:

Reference to ANSI A300 Standards for Tree Planting and Tree Protection

Conducting a Forest Stand Delineation

Minimum Forest Protection of 30 and 50 Percent of Existing Forest

Timing for Bonds and Guarantees

Additional Tree Planting Requirements



# Key SPC Recommended Modifications:

Include Purpose Statement

Revise Forest Definition

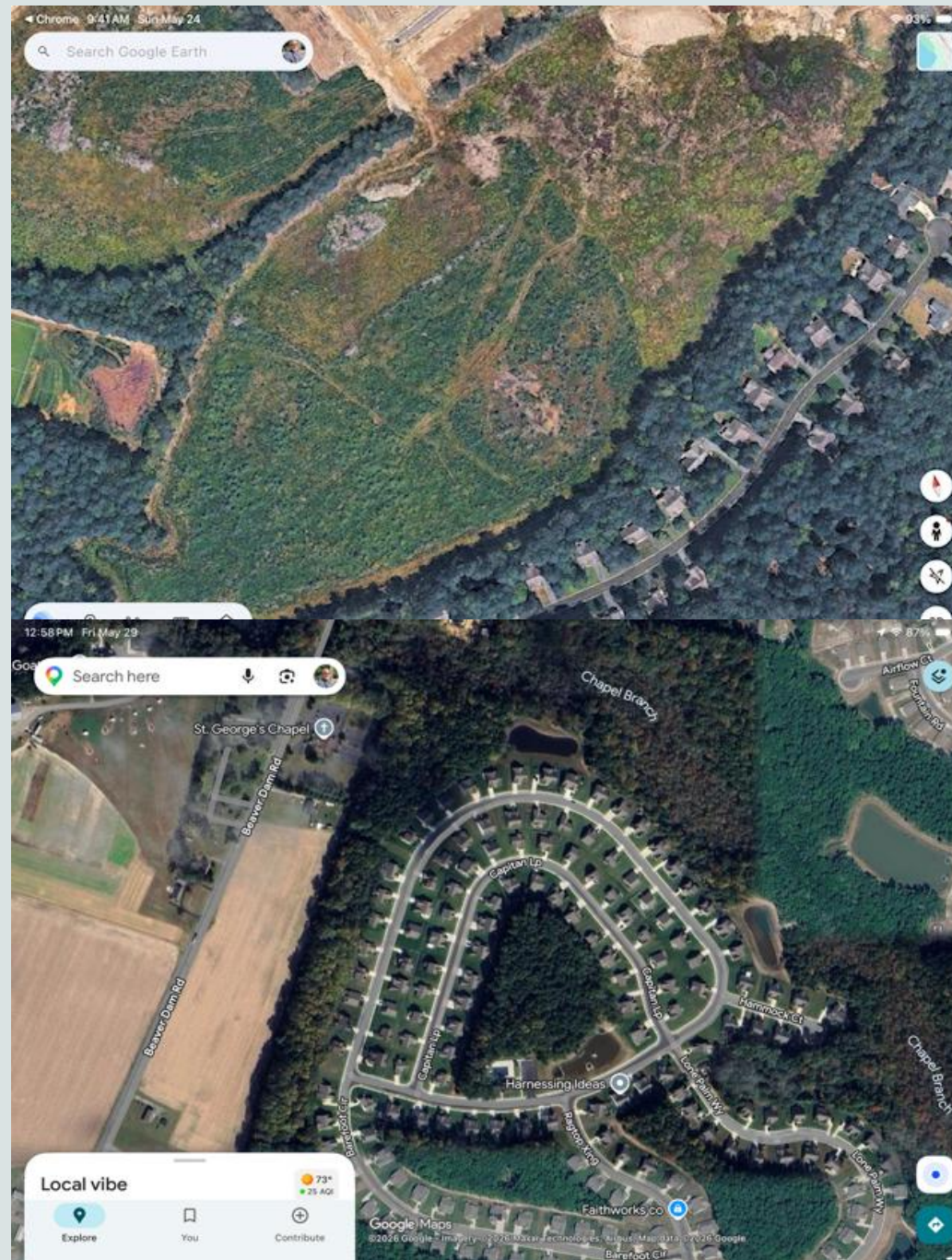
Add Forest Preservation and  
Maintenance Plan Requirement

Modify Mitigation Procedure

Add Overall Landscape Plan  
Requirement and Specific Tree  
Planting



# Add Purpose



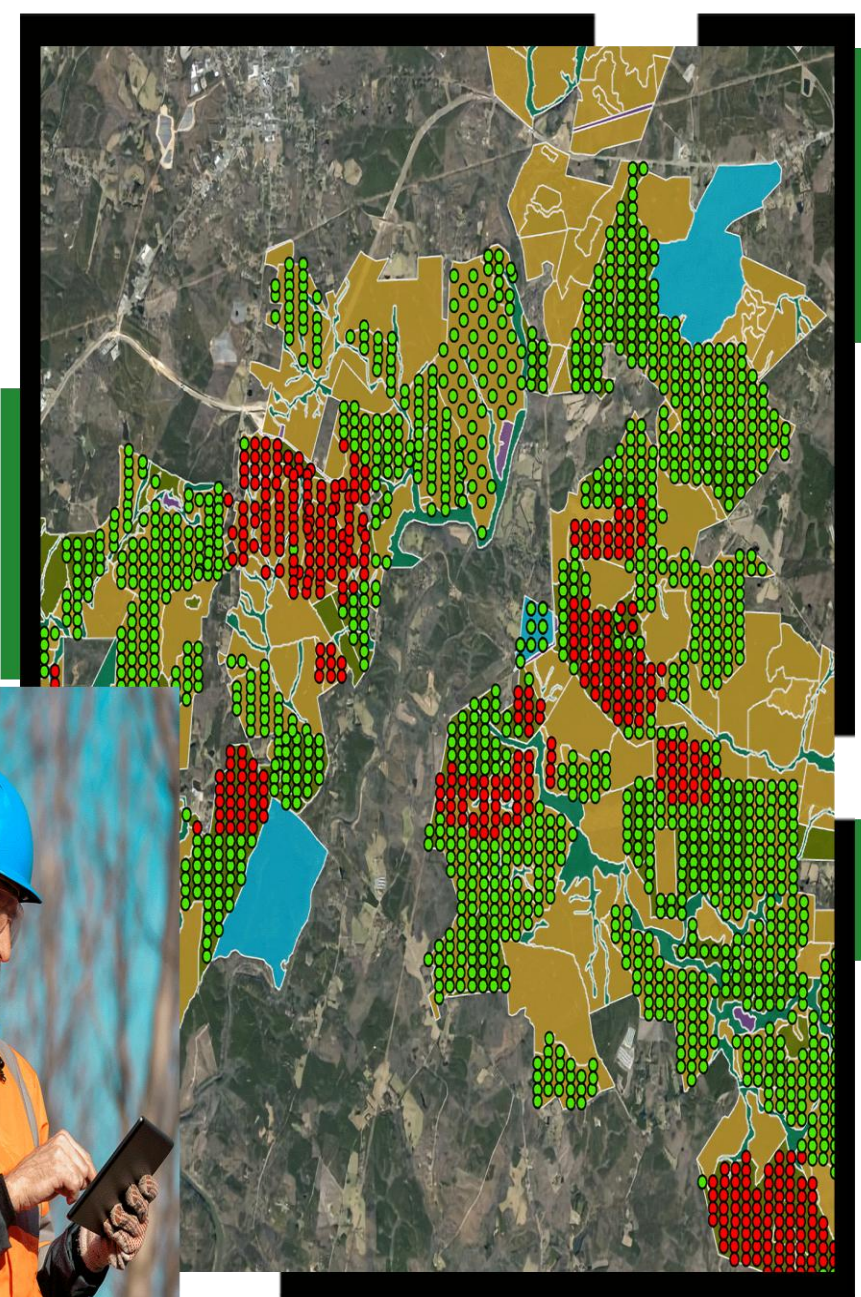
# FOREST Definition

“A vegetative community dominated by trees and other woody shrubs and plants, covering a land area of 10,000 square feet or greater, with a minimum of fifty feet in width, and with a minimum of 100 trees per acre.



# Add Requirement for a Forest Preservation and Maintenance Plan

A report and plan that relying on the information of the FSD, identifies those forests having the highest value for ecological significance and importance that should be preserved. This includes unique ecological features, wildlife habitat values, maturity, proximity to resource buffers, providing buffers between house sites, and forests with the highest degree of contiguousness.





# Forest Preservation and Maintenance Plan (cont.)

The plan will also identify steps and processes to protect forests during construction and long-term maintenance of the forest over time, including for overall forest health, invasive species control, and hazard tree removal



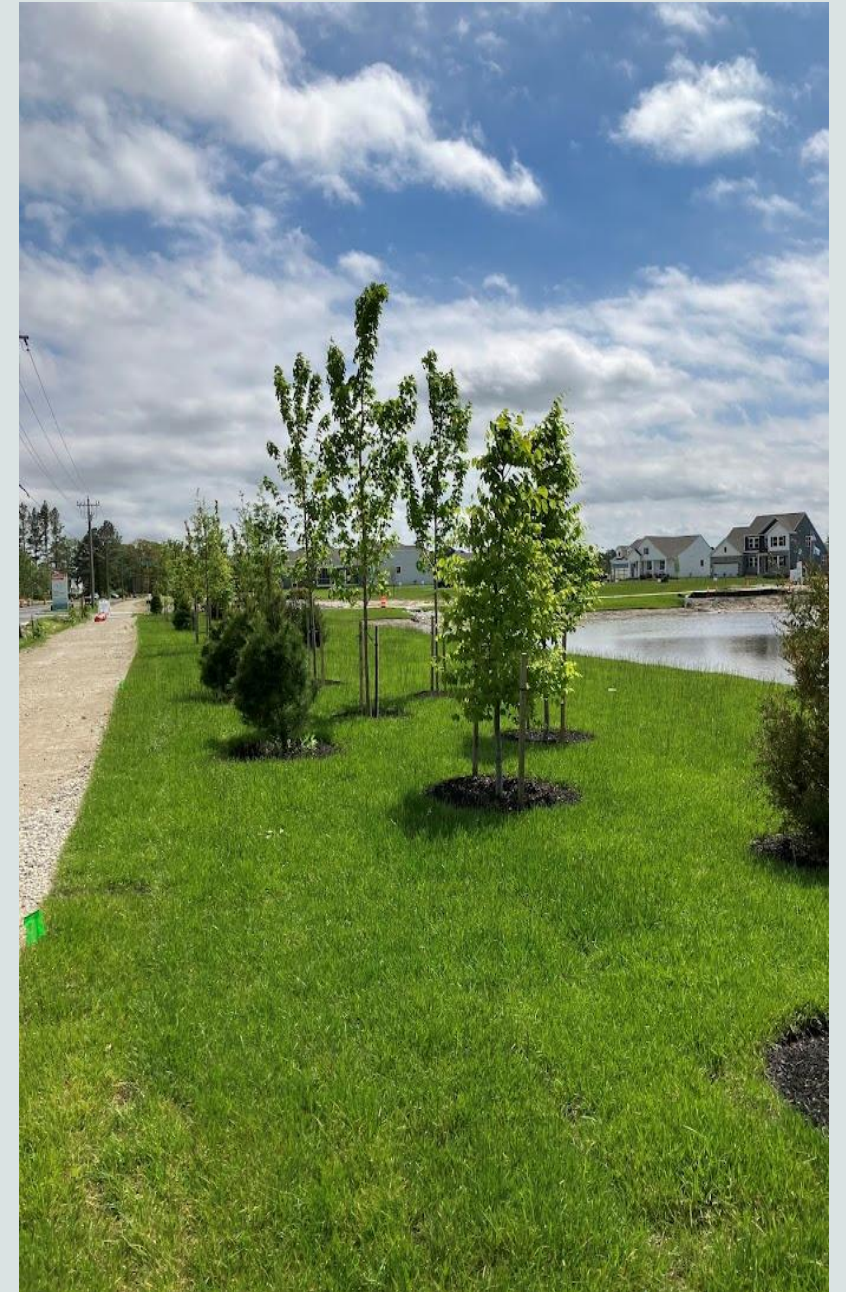


# Concerns Over Mitigation





YOU CAN'T  
REPLACE THE  
VALUE OF  
MATURE  
TREES  
WITH  
NEW  
PLANTINGS





Add language that “no forest area beyond the required preservation requirements shall be removed. If, through no fault or forethought of the developer, forests are removed above the preservation requirements, the following mitigation standards shall be met”  
(Continue with existing text).





# Tree Planting and Landscape Plan Requirements





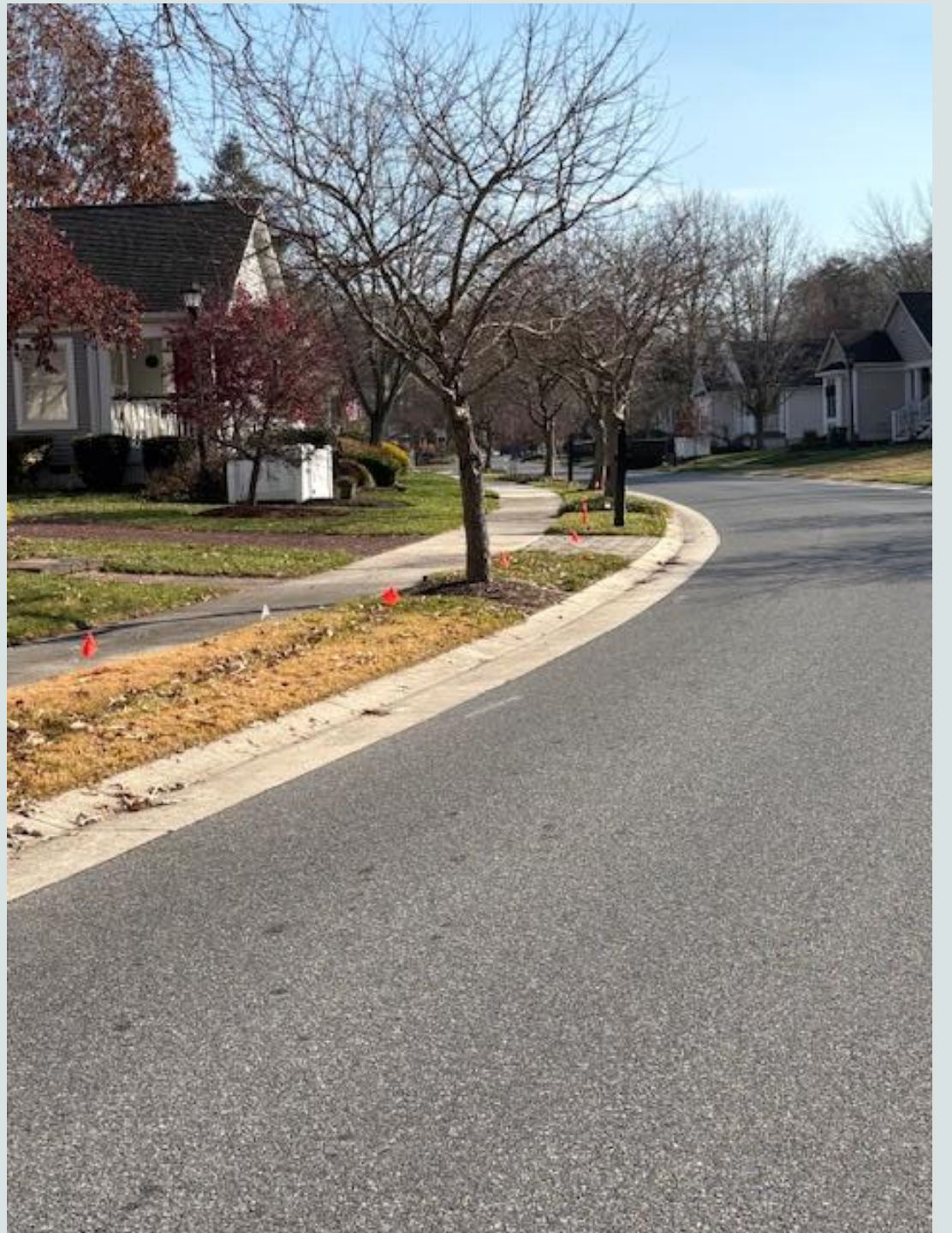
# Require a Detailed Landscape Plan for the Entire Development



This Photo by Unknown Author is licensed under [CC BY-NC](https://creativecommons.org/licenses/by-nc/4.0/)

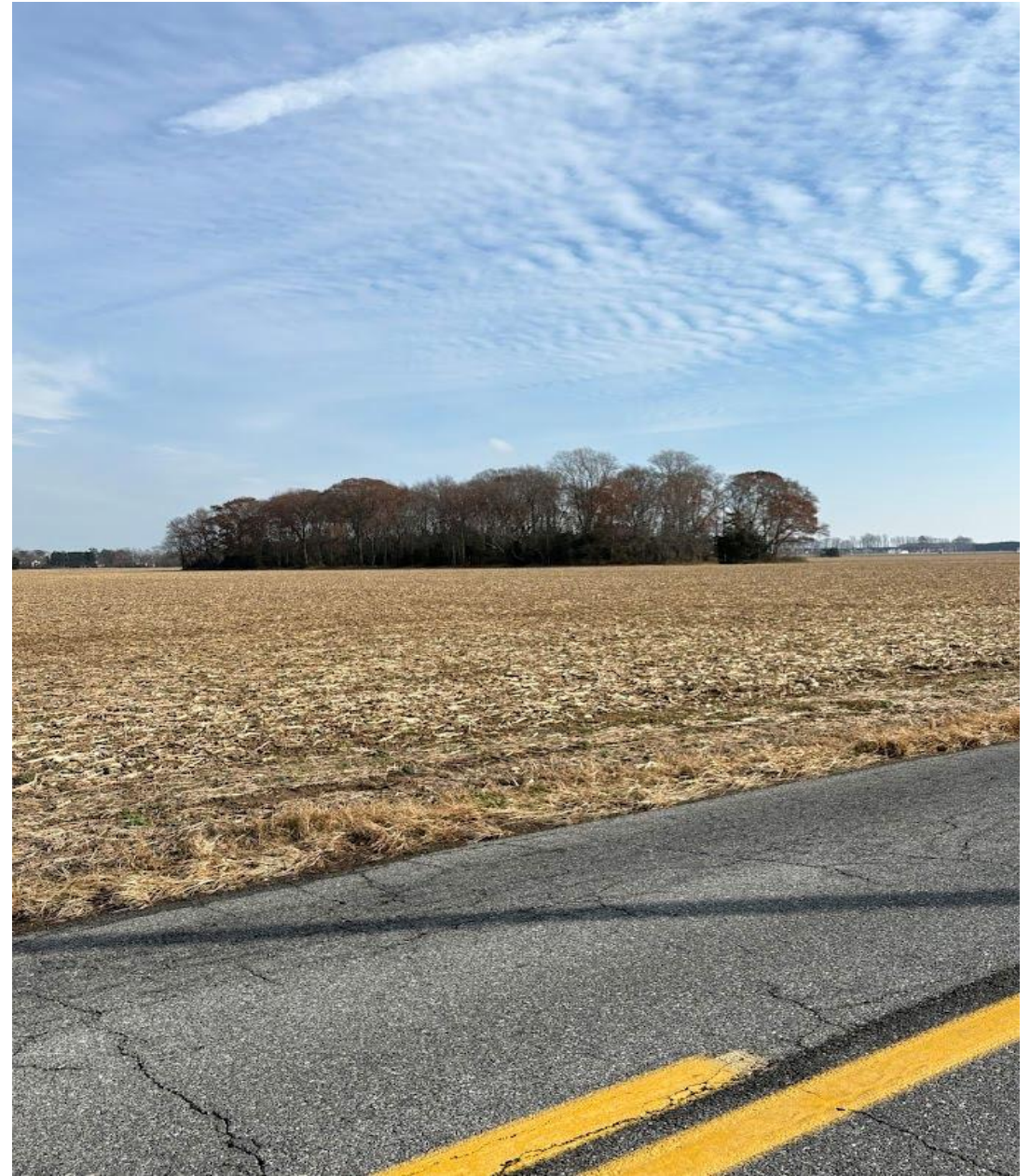
# Specific Landscape Requirements

- Trees along Entrance Drive
- Trees in Open Spaces for Shade
- Appropriately-sized Street Trees between Curb and Sidewalk
- Minimum of One Tree Per House Lot in Front Yard
- Landscape Plants and Trees around Clubhouse, Playgrounds and other Community Resources
- Visual Buffer Screen Between Houses and Infrastructure Facility

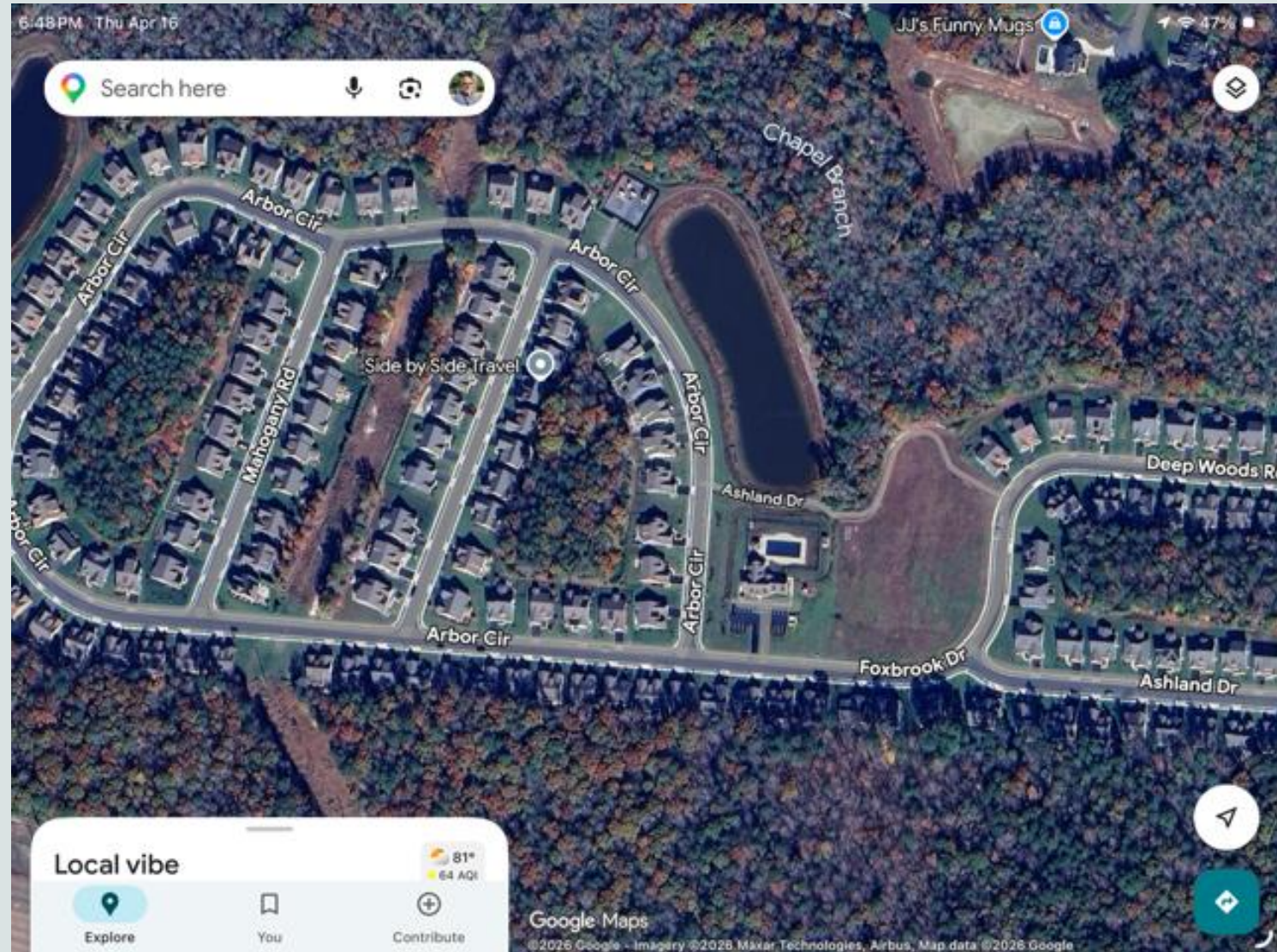




Commend Sussex  
County Planning  
and Zoning and  
County Council for  
this Important Step  
Forward



Our  
Communities  
Have The  
Opportunity  
To Look Like  
This



# Handout With Specific Language Changes

